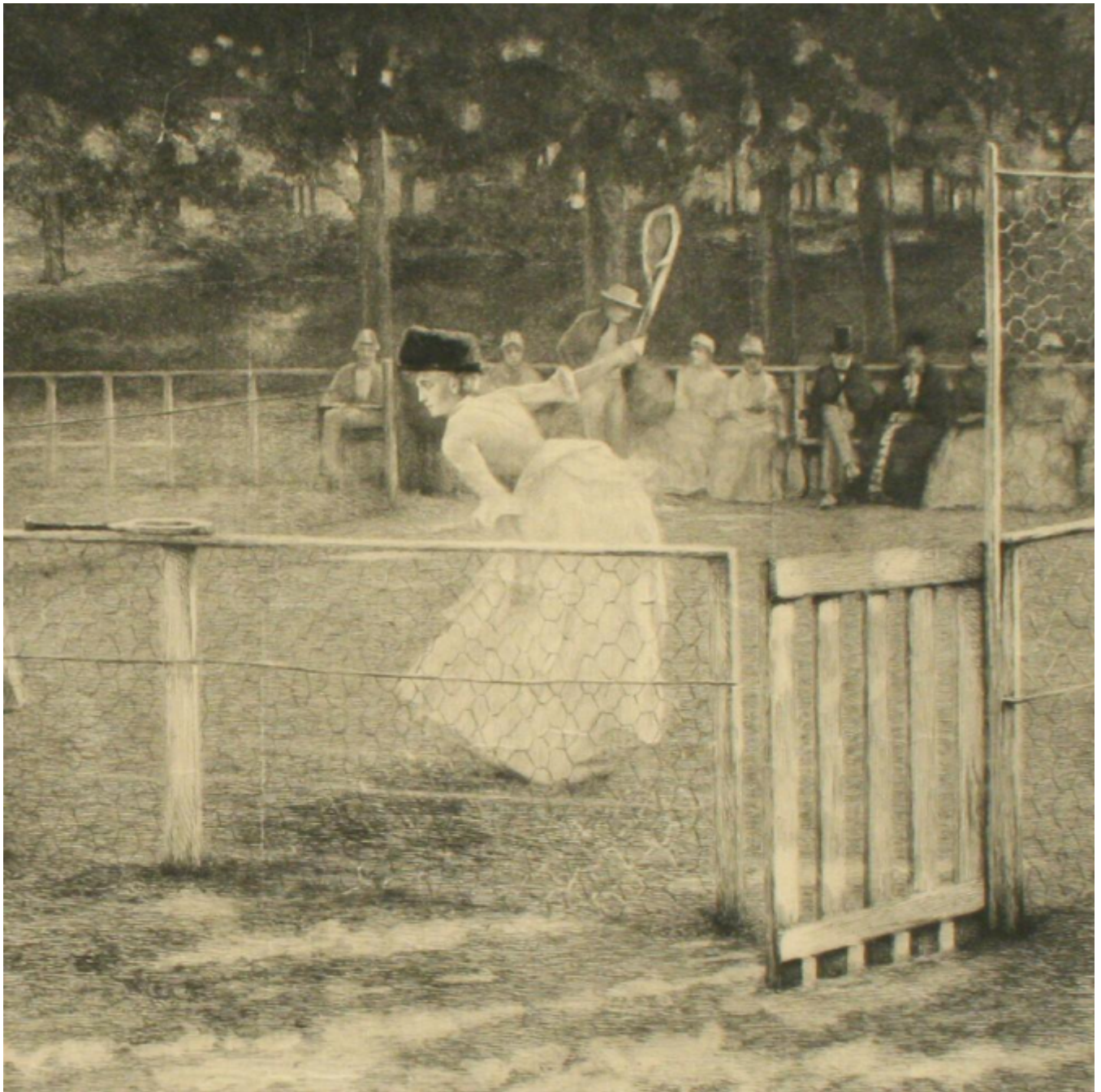




THE TENNIS PARTY, SIR J. LAVERY.

Sold



REF: 23020

Height: 53.5 cm (21.1")

Width: 99.5 cm (39.2")

## Description

An original tennis etching by Daniel Mordant. This black and white etching fully represents the original oil painting by Sir J. Lavery titled "The Tennis Party" which now hangs in the Aberdeen Art Gallery.

The original was painted near Paisley in Renfrewshire, Scotland, during the summer of 1885. Lavery captures the figures in mid-action, like a photographer taking a single snapshot. Despite its spontaneous appearance, the composition was based on a preliminary sketch and built up over a period of weeks.

image size: 31 inches wide, 13 inches high.