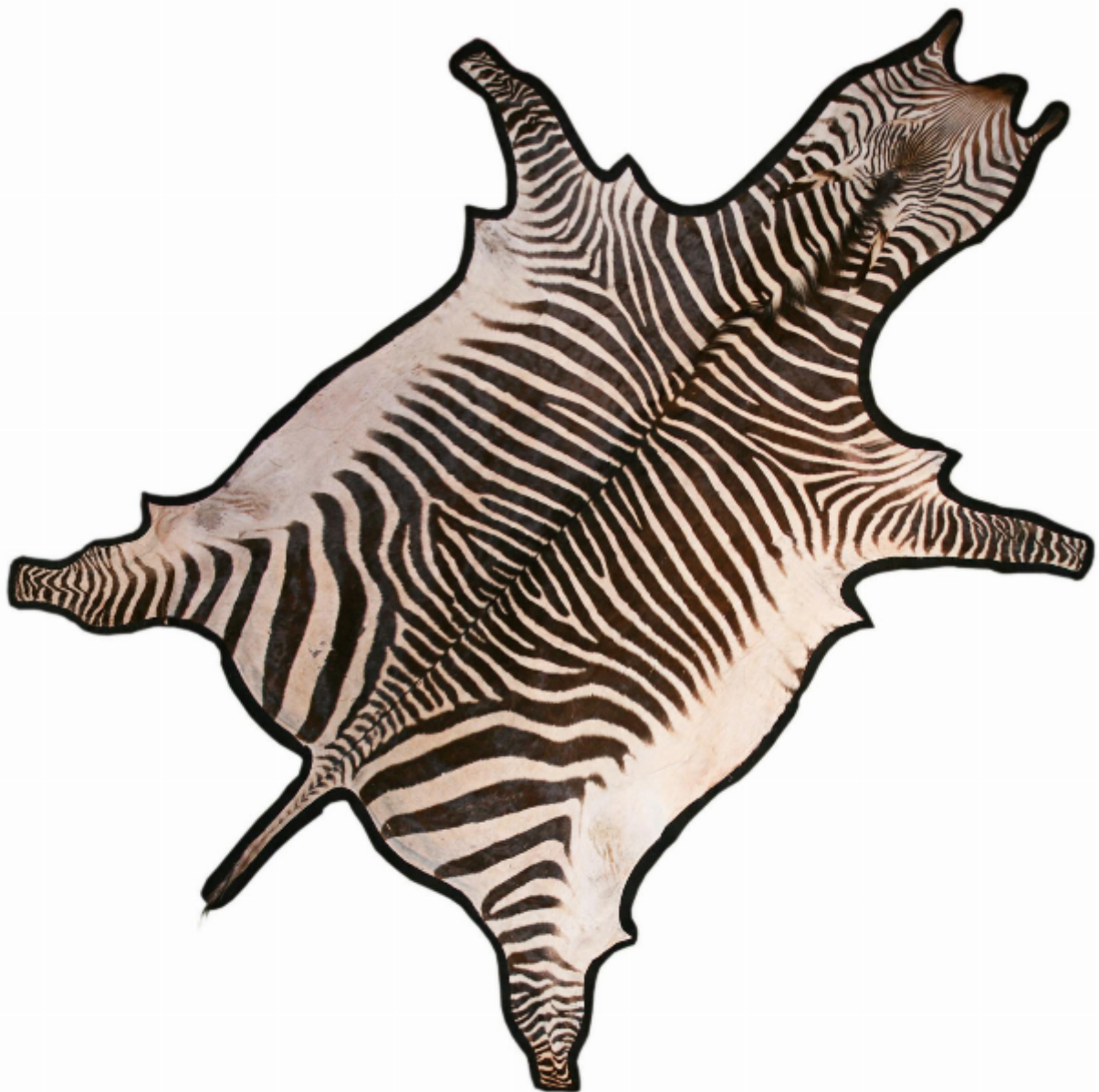




Burchell Zebra Skin Rug

Sold



REF: 27112

Height: 328 cm (129.1")

Width: 223.5 cm (88")

## Description

Antique Taxidermy Zebra Skin.

A beautiful vintage Burchell Zebra skin rug, would also make a great wall hanging statement. The main and tail of this skin is still attached as are the ears and the skin has been backed with black felt. The markings are extremely good, with a good range of shapes and colours. Each Zebra skin has its own particular characteristics, the stripes ranging from beige to very dark brown on a cream background. The hide is in wonderful condition with no rips, tears or stains, a wonderful exotic rug or wall hanging.

Nose to tail 129 inches and 88 inches wide.

The zebra is a close relative of the horse and persist in the wild today in several parts of the Old World. These handsome striped animals fall into three distinct species: The Grevy's zebra, the Burchell's zebra and the mountain zebra. The Burchell's zebra, also known as the common zebra or plains zebra, is the most common and geographically widespread of the species. It ranges from the south of Ethiopia through East Africa to as far south as Botswana and eastern South Africa. It is named after the British explorer and naturalist William John Burchell.